

고객명 : (주) 우신스틸
주소 : 경상북도 영천시 금호읍 영천산단로 120



고객으로부터 제공받은 시료에 대한 정보는 다음과 같습니다.

SGS 파일 번호 : AYGU20-06423K
제품명 : SWCH10A
아이템 번호 : N/A
시료 접수 날짜 : 2020. 07. 01
시험 시행 기간 : 2020. 07. 01 ~ 2020. 07. 09
시험 결과 : 자세한 결과는 다음 장을 참조하세요.

한국에스지이에스 (주) / 시험사업본부 부산시험소



이 동 주 / 기술책임자



시험성적서 번호 F690101/LF-CTSAYGU20-06423K

발행일: 2020. 07. 09 페이지: 2 / 4

시료번호 : AYGU20-06423K.001
 시료명 : SWCH10A
 아이템번호 : N/A
 재질 : METAL

Heavy Metals

| 분석항목 | 단위 | 시험방법 | 검출한계 | 결과 |
|-------------------------------|--------|---|------|-----|
| Cadmium (Cd) | mg/kg | With reference to IEC 62321-5:2013(Determination of Cadmium by ICP-OES) | 0.5 | 불검출 |
| Lead (Pb) | mg/kg | With reference to IEC 62321-5:2013(Determination of Lead by ICP-OES) | 5 | 불검출 |
| Mercury (Hg) | mg/kg | With reference to IEC 62321-4:2013(Determination of Mercury by ICP-OES) | 2 | 불검출 |
| Hexavalent Chromium (Cr VI) * | µg/cm² | With reference to IEC 62321-7-1:2015 (Determination of CrVI by UV-Vis) | 0.1 | 불검출 |

Flame Retardants-PBBs/PBDEs

| 분석항목 | 단위 | 시험방법 | 검출한계 | 결과 |
|-------------------------|-------|---|------|-----|
| Monobromobiphenyl | mg/kg | With reference to IEC 62321-6:2015 (Determination of PBBs and PBDEs by GC-MS) | 5 | 불검출 |
| Dibromobiphenyl | mg/kg | With reference to IEC 62321-6:2015 (Determination of PBBs and PBDEs by GC-MS) | 5 | 불검출 |
| Tribromobiphenyl | mg/kg | With reference to IEC 62321-6:2015 (Determination of PBBs and PBDEs by GC-MS) | 5 | 불검출 |
| Tetrabromobiphenyl | mg/kg | With reference to IEC 62321-6:2015 (Determination of PBBs and PBDEs by GC-MS) | 5 | 불검출 |
| Pentabromobiphenyl | mg/kg | With reference to IEC 62321-6:2015 (Determination of PBBs and PBDEs by GC-MS) | 5 | 불검출 |
| Hexabromobiphenyl | mg/kg | With reference to IEC 62321-6:2015 (Determination of PBBs and PBDEs by GC-MS) | 5 | 불검출 |
| Heptabromobiphenyl | mg/kg | With reference to IEC 62321-6:2015 (Determination of PBBs and PBDEs by GC-MS) | 5 | 불검출 |
| Octabromobiphenyl | mg/kg | With reference to IEC 62321-6:2015 (Determination of PBBs and PBDEs by GC-MS) | 5 | 불검출 |
| Nonabromobiphenyl | mg/kg | With reference to IEC 62321-6:2015 (Determination of PBBs and PBDEs by GC-MS) | 5 | 불검출 |
| Decabromobiphenyl | mg/kg | With reference to IEC 62321-6:2015 (Determination of PBBs and PBDEs by GC-MS) | 5 | 불검출 |
| Monobromodiphenyl ether | mg/kg | With reference to IEC 62321-6:2015 (Determination of PBBs and PBDEs by GC-MS) | 5 | 불검출 |
| Dibromodiphenyl ether | mg/kg | With reference to IEC 62321-6:2015 (Determination of PBBs and PBDEs by GC-MS) | 5 | 불검출 |
| Tribromodiphenyl ether | mg/kg | With reference to IEC 62321-6:2015 (Determination of PBBs and PBDEs by GC-MS) | 5 | 불검출 |

This document is issued by the Company subject to its General Conditions of Service printed overleaf, available on request or accessible at <http://www.sgs.com/en/Terms-and-Conditions.aspx> and, for electronic format documents, subject to Terms and Conditions for Electronic Documents at <https://www.sgs.com/en/terms-and-conditions/terms-e-document>. Attention is drawn to the limitation of liability, indemnification and jurisdiction issues defined therein. Any holder of this document is advised that information contained hereon reflects the Company's findings at the time of its intervention only and within the limits of Client's instructions, if any. The Company's sole responsibility is to its Client and this document does not exonerate parties to a transaction from exercising all their rights and obligations under the transaction documents. This document cannot be reproduced except in full, without prior written approval of the Company. Any unauthorized alteration, forgery or falsification of the content or appearance of this document is unlawful and offenders may be prosecuted to the fullest extent of the law. Unless otherwise stated the results shown in this test report refer only to the sample(s).

시료번호 : AYGU20-06423K.001
 시료명 : SWCH10A
 아이템번호 : N/A
 재질 : METAL

Flame Retardants-PBBs/PBDEs

| 분석항목 | 단위 | 시험방법 | 검출한계 | 결과 |
|--------------------------|-------|---|------|-----|
| Tetrabromodiphenyl ether | mg/kg | With reference to IEC 62321-6:2015 (Determination of PBBs and PBDEs by GC-MS) | 5 | 불검출 |
| Pentabromodiphenyl ether | mg/kg | With reference to IEC 62321-6:2015 (Determination of PBBs and PBDEs by GC-MS) | 5 | 불검출 |
| Hexabromodiphenyl ether | mg/kg | With reference to IEC 62321-6:2015 (Determination of PBBs and PBDEs by GC-MS) | 5 | 불검출 |
| Heptabromodiphenyl ether | mg/kg | With reference to IEC 62321-6:2015 (Determination of PBBs and PBDEs by GC-MS) | 5 | 불검출 |
| Octabromodiphenyl ether | mg/kg | With reference to IEC 62321-6:2015 (Determination of PBBs and PBDEs by GC-MS) | 5 | 불검출 |
| Nonabromodiphenyl ether | mg/kg | With reference to IEC 62321-6:2015 (Determination of PBBs and PBDEs by GC-MS) | 5 | 불검출 |
| Decabromodiphenyl ether | mg/kg | With reference to IEC 62321-6:2015 (Determination of PBBs and PBDEs by GC-MS) | 5 | 불검출 |

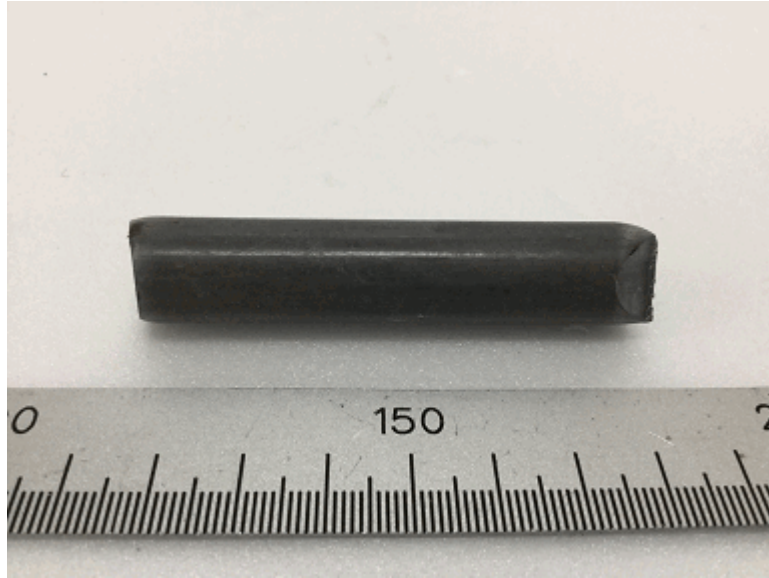
Flame Retardants

| 분석항목 | 단위 | 시험방법 | 검출한계 | 결과 |
|--------------------------------------|-------|---------------------------------------|------|-----|
| Hexabromocyclododecane (HBCDD, HBCD) | mg/kg | With reference to US EPA 3540C, GC/MS | 5 | 불검출 |

- 주) (1) 불검출 : 검출한계 미만
 (2) *= a. 검출 값이 0.13 ug/cm² 이상이면 Positive 로 결과 값 입력
 b. 검출 값이 0.10 ug/cm² 이하이면 Negative 로 결과 값 불검출로 입력
 c. 검출 값이 0.10 ug/cm² 과 0.13 ug/cm² 사이의 값이면 inconclusive 로 의심이 됨.(3회 재확인 시험을 진행해야함.)
 (3) 이 시험 결과는 의뢰자가 제시한 시료 및 시료명에만 한정됩니다.
 이 시험 성적서는 KOLAS 인정과 관련 없습니다.

This document is issued by the Company subject to its General Conditions of Service printed overleaf, available on request or accessible at <http://www.sgs.com/en/Terms-and-Conditions.aspx> and, for electronic format documents, subject to Terms and Conditions for Electronic Documents at <https://www.sgs.com/en/terms-and-conditions/terms-e-document>. Attention is drawn to the limitation of liability, indemnification and jurisdiction issues defined therein. Any holder of this document is advised that information contained hereon reflects the Company's findings at the time of its intervention only and within the limits of Client's instructions, if any. The Company's sole responsibility is to its Client and this document does not exonerate parties to a transaction from exercising all their rights and obligations under the transaction documents. This document cannot be reproduced except in full, without prior written approval of the Company. Any unauthorized alteration, forgery or falsification of the content or appearance of this document is unlawful and offenders may be prosecuted to the fullest extent of the law. Unless otherwise stated the results shown in this test report refer only to the sample(s).

접수된 시료의 사진 :



AYGU20-06423K.001

*** 끝 ***

This document is issued by the Company subject to its General Conditions of Service printed overleaf, available on request or accessible at <http://www.sgs.com/en/Terms-and-Conditions.aspx> and, for electronic format documents, subject to Terms and Conditions for Electronic Documents at <https://www.sgs.com/en/terms-and-conditions/terms-e-document>. Attention is drawn to the limitation of liability, indemnification and jurisdiction issues defined therein. Any holder of this document is advised that information contained hereon reflects the Company's findings at the time of its intervention only and within the limits of Client's instructions, if any. The Company's sole responsibility is to its Client and this document does not exonerate parties to a transaction from exercising all their rights and obligations under the transaction documents. This document cannot be reproduced except in full, without prior written approval of the Company. Any unauthorized alteration, forgery or falsification of the content or appearance of this document is unlawful and offenders may be prosecuted to the fullest extent of the law. Unless otherwise stated the results shown in this test report refer only to the sample(s).